

South Bend Symphony chooses Eberhart estate

Showhouse

By GREG SWIERCZ

Tribune Staff Writer

The Frederick G. Eberhart estate, which is being vacated by the Yaw Administrative Center of School City, has been chosen by the South Bend Symphony Women's Association as its Showhouse for 1985.

The announcement was made by Tim Bornheimer, publicity chairman for the Showhouse project.

The Symphony's Showhouse project is a fund-raising effort for which local designers donate interior decorating services in a mansion chosen by the Symphony Association. Public tours and other money-raising activities are held at the estate throughout the stages of the work.

Beginning its fourth year, the project plans call for preparation of the 9,100-square-foot mansion for public viewing for 16 days in September.

"The major purpose is to raise funds," Marilyn Shroyer, co-chairman of the project, said. "The designers donate their talents and show how a house can be converted to its historical origin."

Shroyer, along with co-chairman Mary Lou Schwartz, expressed their excitement about the 10-month project, which is the first Showhouse selected by the symphony in Mishawaka. They hope to duplicate the efforts of last year's project at the Erskine mansion in South Bend which netted nearly \$45,000 for the South Bend Symphony Orchestra Association.

A major share of funds raised from the Showhouse goes toward

Author Rose Zar to speak at library

Rose Zar, author and principal of the United South Bend Hebrew School, will speak on "Passing as a Christian in Nazi-Occupied Poland" at 7:30 p.m. Thursday at the Mishawaka-Penn Public Library.

Zar will discuss her experiences in Poland during World War II. The program is free to the public and will take

place in the library's Spencer Gallery.

Zar's book, "In the Mouth of the Wolf," received a Best Book Award from the Association of Jewish Libraries. She currently lives in South Bend.

The program is being sponsored by the Friends of the Library. A short business meeting will precede the program.

defraying costs of presenting the free Christmas concert and a spring performance for Northern Indiana and Southern Michigan fourth-graders. Last year, the Women's Association's fund-raising efforts amounted to one-eighth of the orchestra's 1983-84 operating budget.

"The Eberhart mansion was selected because it was one of the estates available," Schwartz said. "Our hope is that the people of Mishawaka and of Michiana will become as excited about (the Showhouse) as we are."

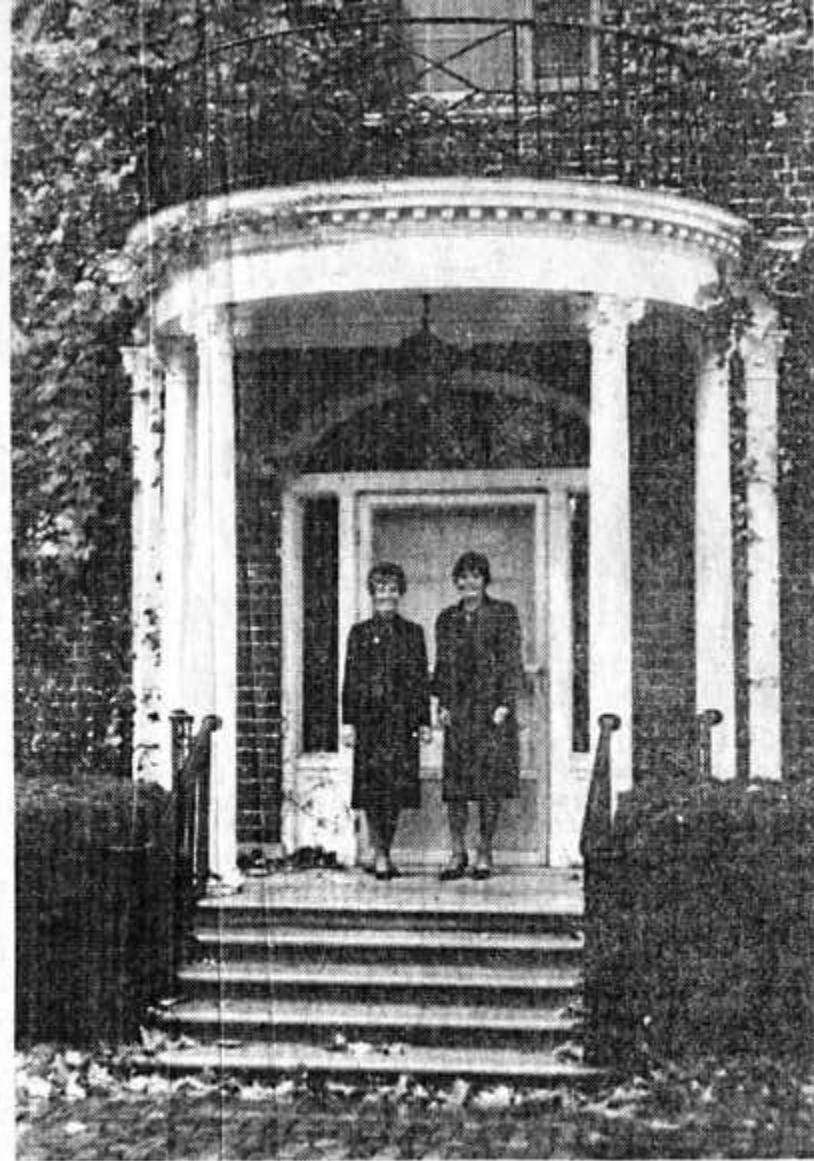
The project is in its initial stage, where some 24 committee chairmen have been selected to coordinate the volunteers from the Michiana area.

Eberhart mansion and the surrounding 8.7 acres, which has housed the School City of Mishawaka's administrative offices known as the Yaw Center since 1967, has been sold to Jack Hickey Associ-

ates, Inc. He has gained preliminary approval from the City Plan Commission for construction of duplex condominiums and single-family units on the property. According to Schwartz and Shroyer, his background as a developer will eliminate any problems which might arise with the structure of the mansion.

"The Eberhart estate is in excellent condition, and some of the original wallpaper and other decorations are still here," Schwartz said. "Since Jack Hickey is the owner and also is a developer, we do not foresee any structural problems."

The Eberhart house is a Williamsburg colonial which is enhanced in a Georgian revival style. It was built and occupied by Frederick and Bertha Eberhart in 1929. In 1947, it was sold to Freeman and Helen Yeager, and it was then bought by the School City of Mishawaka in 1967.



SHOWHOUSE CHAIRMEN — Mary Lou Schwartz, at left, and Marilyn Shroyer of the South Bend Symphony Orchestra Foundation's Women's Association are co-chairwomen of this year's fund-raising effort. Featured will be the Eberhart Estate, which now houses the Yaw Administrative Center, as the Showhouse of 1985. The porch of the mansion depicts the style that will accent the work interior decorators will do to the home. Tribune Staff Photo by Greg Swiercz